

Mark #	Mark Name	CCG #	Colour	Mark #	Mark Name	CCG #	Colour
1	Dewolf Park	BBYC		23	DREA Barge		
2	Playground	BBYC		24	Spare		
3	Inner Start	BBYC		25	Spare		
4	Outer Start	BBYC		26	Spare		
5	Long Cove	BBYC		27	Spare		
6	Spruce Island	H48	R	28	Spare		
7	Wellesley	H46	R	29	Spare		
8	Ferneigh	H45	G	30	MacKay Bridge		
9	Navy Mooring Buoy		W/Or	31	Narrows North	H30	R
10	Magazine	Priv	Or	32	Narrows South	H28	R
11	Wrights Cove (Navy)	HY2	R	33	MacDonald Bridge		
12	Wrights Point Light Buoy	H42	R	34	Dartmouth Cove	HU1	G
13	Navy Diving Buoy		W/Or	35	Georges Island		
14	Rockingham	Priv	Or	36	Imperial Oil	HP22	R
15	Jonquiere	Priv	Or	37	Ives Knoll North	HT2	R
16	Princes Lodge	Priv	Or	38	Indian Point	HP21	G
17	Centre	Priv	Or	39	Ives Knoll West	H22	R
18	DYC Start	Priv	W	40	Mortons		
19	Spare			41	Melville Island	HQ12	R
20	Seaview Point	H39	G	42	Jubilee		
21	Fairview	Priv	Or	43	Deadmans		
22	Spare			44	Birchdale		
45	Control Buoy (No Wake)	HQ	W/Or	46	Pleasant Shoal	H19	G
46	Pleasant Shoal	H19	G	47	Hens And Chickens	HQ2	R
47	Hens And Chickens	HQ2	R	48	Purcells Cove Fairway	HGA	G/R
48	Purcells Cove Fairway	HGA	G/R	49	Purcells Cove	HQ1	G
49	Purcells Cove	HQ1	G	50	Northeast Middle Ground	H17	G
50	Northeast Middle Ground	H17	G	51	Middle Ground West	HKD	Y/B
51	Middle Ground West	HKD	Y/B	52	Navy Mooring Buoys (all)		
52	Navy Mooring Buoys (all)			53	Fergusons Cove	HK17	G
53	Fergusons Cove	HK17	G	54	Middle Ground South	HKC	Y/B
54	Middle Ground South	HKC	Y/B	55	SE Middle Ground	H15	G
55	SE Middle Ground	H15	G	56	Outer Middle Ground West	HKB	Y/B
56	Outer Middle Ground West	HKB	Y/B	57	Outer Middle Ground	HAC	G/R
57	Outer Middle Ground	HAC	G/R	58	Maughers Beach	H14	R
58	Maughers Beach	H14	R	59	Lighthouse Bank	H12	R
59	Lighthouse Bank	H12	R	60	Mars Rock North	H11	G
60	Mars Rock North	H11	G	61	Mars Rock	H9	G
61	Mars Rock	H9	G	62	Herring Cove	HM1	G
62	Herring Cove	HM1	G	63	Lichfield Shoal	H7	G
63	Lichfield Shoal	H7	G	64	Neverfail Shoal	H8	R
64	Neverfail Shoal	H8	R	65	Neverfail North	HN7	G
65	Neverfail North	HN7	G	66	Thrumcap	HN6	R
66	Thrumcap	HN6	R	67	Bear Cove West	HK4	G/R
67	Bear Cove West	HK4	G/R	68	Bear Cove East	H6	R
68	Bear Cove East	H6	R	77	Eastern Passage	HP17	G
77	Eastern Passage	HP17	G	78	Eastern Passage	HP16	R
78	Eastern Passage	HP16	R	79	Eastern Passage	HP15	G
79	Eastern Passage	HP15	G	80	Eastern Passage	HP13	G
80	Eastern Passage	HP13	G				

Sail NS Race Mark Series  
**BEDFORD BASIN SHEET**



**NOT FOR NAVIGATION**

1:75 000

For symbology refer to CHS Chart 1

Sources: National Topographic Database - 1:50 000 Topographic Digital Series sheets 011d05, 011d11, and 011d12.  
 Canadian Hydrographic Service - Digital Nautical Data for charts 4201, 4202, 4203 and 4237.  
 Copyright © Department of Natural Resources Canada. All rights reserved.  
 Copyright © Department of Fisheries and Oceans All rights reserved.  
 Copyright © Neatline Cartography, 2011 All rights reserved.

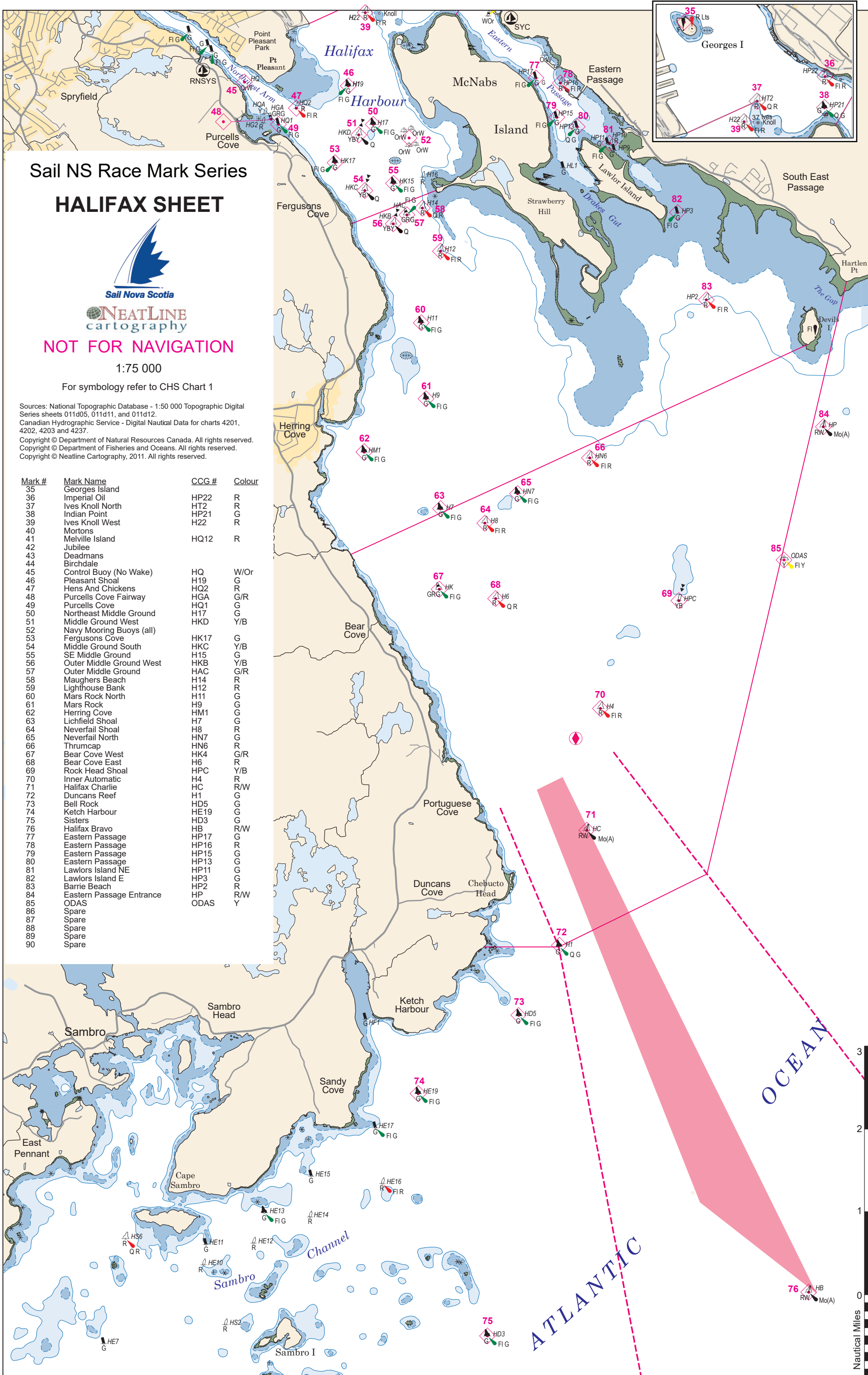
**NORTHWEST ARM**

1:25 000

Nautical Miles

Nautical Miles





# Sail NS Race Mark Series HALIFAX SHEET



NEATLINE  
cartography

**NOT FOR NAVIGATION**

1:75 000

For symbology refer to CHS Chart 1

Sources: National Topographic Database - 1:50 000 Topographic Digital Series sheets 011d05, 011d11, and 011d12.  
Canadian Hydrographic Service - Digital Nautical Data for charts 4201, 4202, 4203 and 4237.  
Copyright © Department of Natural Resources Canada. All rights reserved.  
Copyright © Department of Fisheries and Oceans. All rights reserved.  
Copyright © Neatline Cartography, 2011. All rights reserved.

Mark #	Mark Name	CCG #	Colour
35	Georges Island		
36	Imperial Oil	HP22	R
37	Ives Knoll North	HT2	R
38	Indian Point	HP21	G
39	Ives Knoll West	H22	R
40	Mortons		
41	Melville Island	HQ12	R
42	Jubilee		
43	Deadmans		
44	Birchdale		
45	Control Buoy (No Wake)	HQ	W/Or
46	Pleasant Shoal	H19	G
47	Hens And Chickens	HQ2	R
48	Purcells Cove Fairway	HGA	G/R
49	Purcells Cove	HQ1	G
50	Northeast Middle Ground	H17	G
51	Middle Ground West	HKD	Y/B
52	Navy Mooring Buoys (all)		
53	Fergusons Cove	HK17	G
54	Middle Ground South	HKC	Y/B
55	SE Middle Ground	H15	G
56	Outer Middle Ground West	HKB	Y/B
57	Outer Middle Ground	HAC	G/R
58	Maughers Beach	H14	R
59	Lighthouse Bank	H12	R
60	Mars Rock North	H11	R
61	Mars Rock	H9	G
62	Herring Cove	HM1	G
63	Lichfield Shoal	H7	G
64	Neverfail Shoal	H8	R
65	Neverfail North	HN7	R
66	Thrumcap	HN6	R
67	Bear Cove West	HK4	G/R
68	Bear Cove East	H6	R
69	Rock Head Shoal	HPC	Y/B
70	Inner Automatic	H4	R
71	Halifax Charlie	HC	R/W
72	Duncans Reef	H1	R
73	Bell Rock	HD5	G
74	Ketch Harbour	HE19	G
75	Sisters	HD3	G
76	Halifax Bravo	HB	R/W
77	Eastern Passage	HP17	G
78	Eastern Passage	HP16	R
79	Eastern Passage	HP15	G
80	Eastern Passage	HP13	G
81	Lawlors Island NE	HP11	G
82	Lawlors Island E	HP3	G
83	Barrie Beach	HP2	R
84	Eastern Passage Entrance	HP	R/W
85	ODAS	ODAS	Y
86	Spare		
87	Spare		
88	Spare		
89	Spare		
90	Spare		