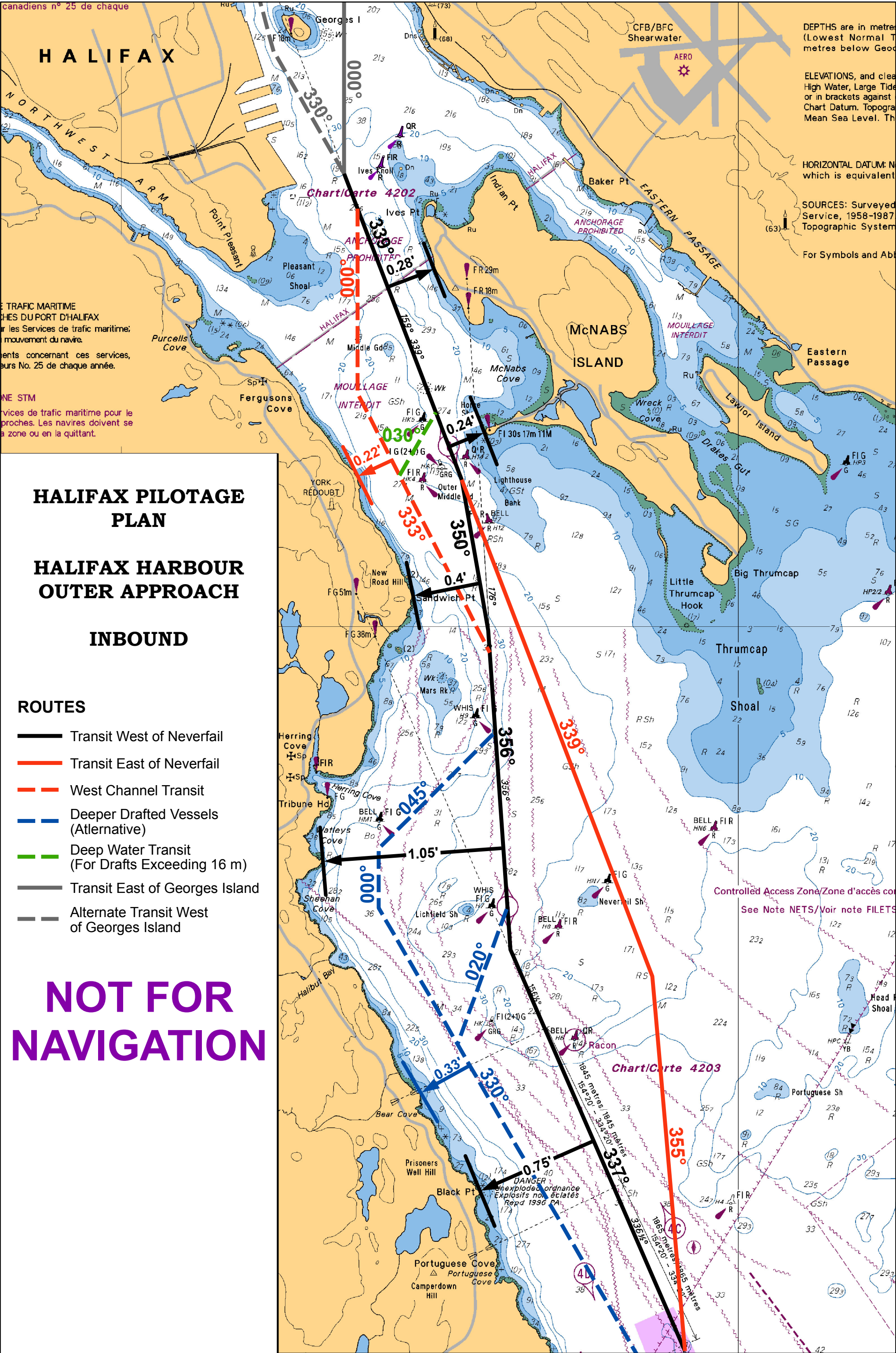


canadiens n° 25 de chaque

# HALIFAX



DEPTHS are in metres (Lowest Normal Tides) metres below Geod

ELEVATIONS, and clearances are in metres (Lowest Normal Tides) or in brackets against Chart Datum. Topographic System Mean Sea Level. The

HORIZONTAL DATUM: NAD 83 which is equivalent to WGS 84

SOURCES: Surveyed by the Hydrographic Service, 1958-1987; Topographic System

For Symbols and Abbreviations see Chart No. 1

TRAFFIC MARITIME  
SERVICES DU PORT D'HALIFAX  
pour les Services de trafic maritime;  
pour le mouvement du navire.  
Règles concernant ces services,  
Chart No. 25 de chaque année.

NOTICE  
SERVICES DE TRAFIC MARITIME  
POUR LE PORT D'HALIFAX  
proches. Les navires doivent se  
présenter à la zone ou en la quittant.

## HALIFAX PILOTAGE PLAN

## HALIFAX HARBOUR OUTER APPROACH

### INBOUND

#### ROUTES

- Transit West of Neverfail
- Transit East of Neverfail
- West Channel Transit
- Deeper Drafted Vessels (Alternative)
- Deep Water Transit (For Drafts Exceeding 16 m)
- Transit East of Georges Island
- Alternate Transit West of Georges Island

# NOT FOR NAVIGATION

Controlled Access Zone/Zone d'accès contrôlé

See Note NETS/Voir note FILETS

Chart/ Carte 4203

4L